

Teegan Ashby's WADE EQUINE COACH

Exterior photos supplied by Wade Equine



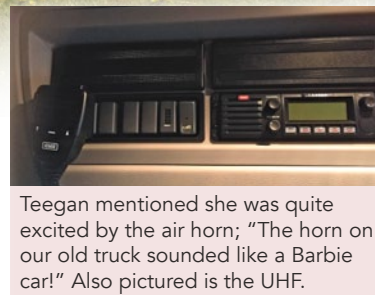
The powerful truck is a Volvo FE Eu6 6x2, 8L 320hp/1200nm, with I-Shift automated 12 speed gearbox.



Having to upgrade her truck license was well worth it for Teegan with cruise control, bluetooth hands free and reversing, side and in truck cameras with large display monitor just some of the features 'Wayno' boasts.



The artwork design on Teegan's dream rig is simple, clean and oozes style.



Teegan mentioned she was quite excited by the air horn; "The horn on our old truck sounded like a Barbie car!" Also pictured is the UHF.



The crawl through is accessed by removing the top couch pillow. The cab seats two in comfort and style, with a sleeper behind.



The slide-out has a table and seating for eight and also converts into a double bed. There are two certified seat belts in the living area.



The charging station has 230v powerpoints and USB charging, plus holders for the devices while they charge.



The luxurious super king bed above the cab in the luton peak. An additional couch backs on to the luton peak and access to the crawl through is behind the back of the couch.

When eventer Teegan Ashby found herself requiring a larger living area and greater storage space, she sure didn't do things by halves, and if this super rig looks a little familiar you may have just walked through it at Equitana. 'Wayno' the Wade, as affectionately called by Teegan, is part of Wade's Platinum Series and was on display at New Zealand's Equidays before being shipped over to Australia just in time for a stopover at Equitana.

"We chose Wade Equine Coaches because the level of workmanship really impressed us," comments Teegan. "It is obvious by the design of the whole truck that they are made by horse people for horse people. The whole truck is so functional without being complicated and looks amazing too."

Of course safety was the number one priority when selecting a truck; "The horses have to be comfortable and safe when travelling to events. With non slip rubber flooring, full stallion head dividers, head and tail windows with fly screens and cooling fans in the horse area, they couldn't be any more comfortable. The tail ramp is not as steep as our old truck and the roof is much higher, making it more inviting for the horses and

less daunting when training young horses."

Safety may have been paramount but comfort for Teegan and her team was a close second. Just some of the fun and luxurious features include under-floor heating, WiFi, a speaker system throughout and even a generator that will turn itself on if the batteries run low.

"We had an eight hour handover/induction day where every detail of the truck was addressed. The truck also has a great 'go to guide' that explains just about everything in the truck, like the generator, solar system, and all electrical appliances."

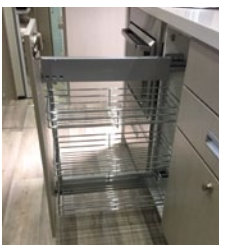
Teegan competes anywhere from two to four horses at eventing competitions and up to five at showjumping competitions - and as any competitor knows there is no shortage of tack and gear needed for travelling away to events: "Our first trip away in the truck was to a local three day showjumping show. We were fully loaded with five horses and three humans. It was a great chance for us to get to know the truck at a relatively low key event. We were easily able to fit in hay, hard feed, bedding and tack for all the horses and there is plenty of food and clothing storage for the humans too."



Kitchen appliances aplenty - three burner gas cook-top with the convection microwave oven located below the cook-top.



The stainless steel dishes drawer means dishes won't be a worry when away at events.

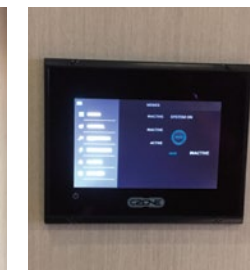


A pull out pantry is just another clever storage idea utilised by Wade.

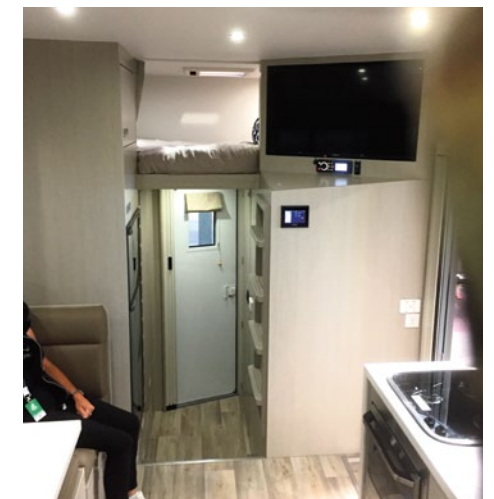


Even more storage above the fridge with the queen size bed to the right.

What more could you want, a 190L fridge to hold enough food for the entire crew and an extensive wine rack ready to be filled to use on the 'good and bad days'.



The trucks many features are controlled by a touch screen control panel, this also includes the truck's own Wi-Fi as well as four music zones which can be played as the same or different levels.



A queen sized bed is nestled in above the lobby and bathroom area, back behind the TV. The under-floor heating will be much appreciated when winter rolls around.



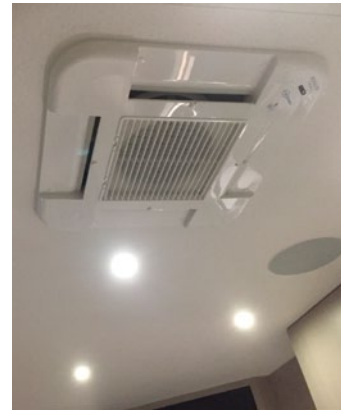
The spacious bathroom has a separate vanity, toilet and shower. Towel storage cubes are cleverly placed under the vanity.



The truck holds nearly 800L of water storage, no more setting time limits on showers!



A heated towel rack hangs above to keep the area user friendly.



It's not a home away from home unless you have air-conditioning.



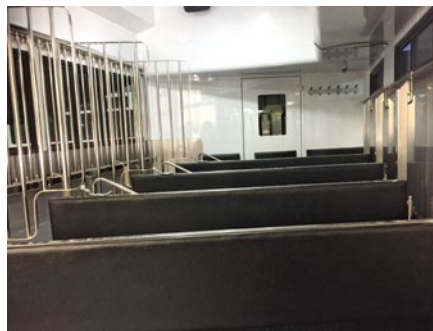
The horse area has plenty of room for five horses and the tail ramp isn't too steep.



All the storage in the horse area is fully enclosed and gas lift.



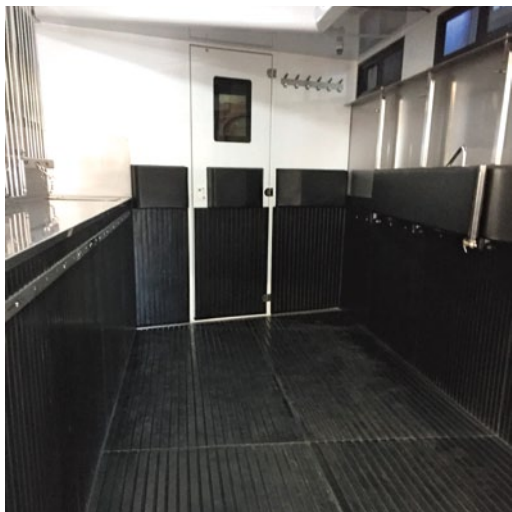
A handy sink in the horse area.



The dividers are stainless steel and interchangeable with generous padding.



The head dividers fold back flush separately from the main partition.



Durable rubber lines the floor and walls. The door into the living is built for safety, with no places a horse could catch themselves on.



A brilliantly designed catch keeps the head divider and padded partition together during travel.



A coat rack to the right of the door to the living area.



The hot/cold retractable hose for washing horses down.



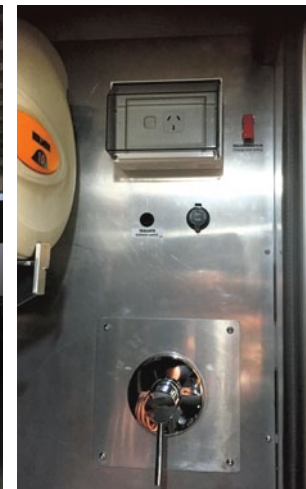
A pressure cleaner is also part of the horse area, making the truck clean out a breeze at a venue or once home. The hose also reaches around the whole truck for when 'Wayno' needs a wash.



The side steps are automated by a keyless touch pad. The whole unit is 11m long and 4.25m high. This truck certainly has plenty of storage. "We wanted to have more room in both the living and horse areas and we particularly needed much more storage to travel feed and tack for five horses to events," says Teegan. "As any eventer would know, there is lots of tack and other gear required for three phases of competition."



The horse area also has a PVC roller blind to further extend the available space.



The hydraulic controls for the tailgate and luton peak located in the tack locker.



The full height tack locker holds six saddles and has 12 hooks. It also stores the pressure cleaning attachment. The floor of the tack locker and storage boxes is a metal grate that allows for easy cleaning.



Something to make you excited about doing the washing, a Bosch Washer/Dryer Combo.



A fridge/freezer in the under floor storage will be home to ice boots and cold drinks and snacks.



Removable water outlets are just one of many great ideas on Teegan's dream rig.



Each tie up point on the drivers side of the truck has brackets for individual feed bins.