



DreamRIG

The McBains' Wade Equine Coach.

Story: Anna Sharpley Photos: Julie Wilson

Trelise and John McBain want to support their 14 year old daughter, Paige, a promising young Australian show jumper. She currently competes three show jumpers with a breeding program ensuring a steady flow of young horses for the future, has one of Australia's best coaches (**Dave Cameron** supported by **Tallara Barwick**), dedicates her life to training and caring for her horses and now she has the best possible means of transporting them, a New Zealand

built Wade Equine Platinum Series Coach. "We had no prior experience with horses," explains Trelise, "but after seeing Paige's total commitment to her show jumping over the last 3 years we decided that it was time to have some comfort at shows and remove the need to travel between the grounds and local accommodation which was very tiring for both ourselves and Paige. We used to live in the city and bought a weekend property on the Central Coast. Once every few weeks

became every week. We thought we should buy Paige a pony and she soon decided she wanted to jump. I bought her a retired Two Star eventer about three years ago; that was the beginning and she has progressed rapidly since then. I think I love the horses now nearly as much as Paige does. They all have such individual personalities and I adore each of them."

The McBains' love of horses has led to a modest but interesting breeding programme under the Greengrove Stud banner. Names like *Quidam de Revel*, *Mr Blue*, *Indoctro*, *Cassini* and *Kannan* ensure that in the future Paige will certainly have horses with the best jumping genetics to choose from. "There was not really a choice for our coach," continues Trelise, "as Wade have set such high standards with these trucks. The living interior is bespoke and I have designed much of it myself. The kitchen is quite unique with the wide long bench and waterfall end. It has been really fun collaborating with Alyssa, selecting colours, finishes and bringing in new features. The living area is a little longer than most of the Platinum Series coaches, but still allows plenty of room for the four horse section. The upholstery although a pale colour is a commercial wear polyester and viscose material and the colour works well with the dark oak timber finish. Every part of the interior design we discussed with Alyssa



The Wade Equine Platinum Series Coach. The remodelled luton gives the truck an even more European look. Height 4300mm, Width 2500mm, Length 11,400mm. The coach is lined inside and out with an aluminium composite material that does not ripple. As you can see there is plenty of visibility from the cab of the Volvo FE. There is also quite a lot of glass on the exterior of the coach. The glass on the coach is the highest grade safety Euroglass and really opens up the interior living area. The slightly larger than usual slide out accommodates the dining area. The off side awning comes out over where horses can be tied (heaven forbid). There is an electric awning on both sides.



A bird's eye view of the living with the super king bed in the luton at the far end. The dining room in the slide out. The kitchen complete with oven, microwave, hob and dishwasher... Can you believe it's a horse truck? The dining table can be electrically lowered to form a double bed. There is sleeping accommodation for seven people.

"The whole horse truck experience is like living at home"



A spacious sleeper is located behind the driver and passenger seats of the Volvo and there is a crawl through to the living area and to the horses beyond. The crawl through can be blocked by a fitted cushion.

The view from the super king bed in the luton towards the horse section. The queen bed is above the entrance to the horse section with the bathroom on the right hand side and the full sized fridge and wardrobes on the left. The TV is flush mounted and the superb stereo system has speakers in the living, the horse section and outside. The amp and the subwoofer are located under the seating. The ladder pictured leads to the queen bed above the bathroom pod.



and we were able to refine it to suit our own individual requirements. The entire Wade team have been a complete pleasure to work with. Both John and I have our Heavy Vehicle licences now and we can't wait to get behind the wheel." When they do get behind the wheel, the driving pleasure will be part and parcel of the spectacular coach. "The whole horse truck experience is like living at home."

The Volvo FE with its aerodynamic design and bold lines is agile and light. It is fitted with an Electronic Stability Programme (ESP) which increases vehicle safety and directional stability in tricky conditions and helps avoid a rollover. It even helps keep you between the lines as there are cameras that alert the driver if they unintentionally move out of their lane. The FE is manoeuvrable and ideal for narrow roads and heavy traffic etc. It also boasts an intelligent I-Shift (Auto) Transmission providing Advanced Driving Ergonomics.

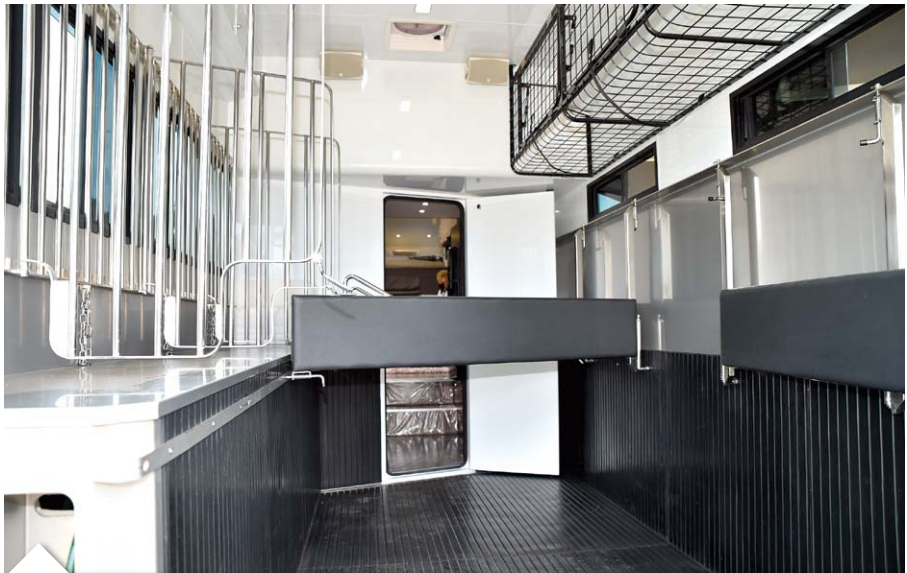
>>>



The loo with heated towel rail above. The truck holds a massive 800L of fresh water.



The amazing bathroom/toilet with separate shower would be happy in a five star hotel.



There is more than enough head room for even the tallest horse in the back of the truck. This four horse section is sleek, easy to maintain and safe for the horses. Above the horses are large enclosed rug/storage racks. Straps make the boxes easy to open and close with the aid of gas struts.

With all the Dream Rigs we talk about the power system be it 12/240 gas, solar and generator that are dealt with individually. Well, not in this Wade Equine Coach which has Mastervolt C Zone System and we are talking advanced electrical engineering. It involves a wireless interface that allows you to use your iPad to interface with the on board switching system for full monitoring and control of the electrical equipment. In effect you never need to plug into mains power. "We want to be independent," says Trelise, "we don't want to have to go and look for a power source. We use lithium ion batteries and they go from flat to fully charged in two hours and are so much better than the open cell batteries and the lithium batteries need no maintenance."

We photographed the McBains' coach just a couple of days after it arrived off the boat from New Zealand. The Volvo FE came straight from the factory in Sweden to New Zealand. This vehicle is the ultimate in European luxury and design, the detail is perfect and the quality of the fixtures and fittings as good if not better than you would find in a luxury home. This is a real Dream Rig and you have to be dreaming big.



The retractable hose for the hot/cold wash is housed in the tack box. The stainless steel tap is just below the reel and there are two protected power points for external use.



The hose attached to the reel in the tack box comes out on the side of the chest box just at the top of the loading ramp. There is a hose attachment as well as a Gerni attachment for cleaning out the back of the truck.



The combination of stainless steel and rubber is easy to maintain and will not rust. The padded partitions are easy to open and adjust. Stainless steel head dividers and bars on the large opening windows keep everyone safe but sociable.



Rubber feed bins attach to the side of the truck.



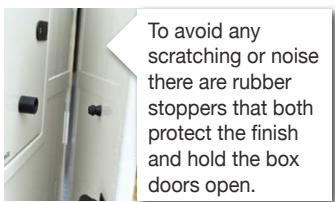
There is plenty of under floor storage for hay, feed rugs or whatever, even a motorbike. The outdoor fridge for ice boots and / or refreshments can be seen at the bottom right hand corner of this photo. All boxes on the coach are of course lockable.



A Bosch washer/dryer is fitted into one of the external boxes.



The spacious tack box.



To avoid any scratching or noise there are rubber stoppers that both protect the finish and hold the box doors open.



Another under floor storage area that runs the full width of the truck, ideal for portable yards/stables.