

## DREAM RIG



# Stephanie McDonald's WADE EQUINE WEEKENDER

Stephanie McDonald has been quietly achieving in the horse world for many years. In her 20s Steph began her riding career in the showing world, excelled in Western disciplines and is now one of Australia's up and coming FEI dressage riders, achieving great Small Tour success with her Dutch import, *Che de Jeu* by *Glock's Voice* out of a *Jazz* mare. No one ever gets to the top alone and Steph's parents, Sally and Howard are 100% behind her equestrian ambitions. If the McDonalds, all of whom live in Berwick, Victoria are going to do something, they are going to do it well and that was certainly the case when it came to purchasing a new vehicle to transport Steph's horses, with a new Wade

Equine Weekender, sitting impressively in the driveway when we visited. One of only two in Australia.

Horse Deals readers are familiar with the Wade Equine Coaches manufactured in New Zealand, as the magazine has featured a number of these luxury horse transport vehicles. The Wade Equine Weekender is a new vehicle manufactured to suit the horse enthusiast who has from one to three horses and although it has all the comforts of home, it is not quite the "runaway from home" size that we have seen before. The Weekender is for quality not quantity and for a short stay, not months on the road. Let's take a look.



The Wade Equine Weekender weighs in at just over 6 tonne with European styling with plenty of storage. There are tie ups on the driver's side, but Steph does not want to take her horse anywhere that does not have a stable. Tying horses to the truck is an Australian custom. It is not done in England, Europe or the USA. The horses either stay on the truck or are stabled.



The only additions the McDonald's have made to the standard Weekender are the leather upholstery on the seats.



The power comes from an Izuzu NQR 190HP 5.2L engine with auto transmission. The vehicle is easily manoeuvrable and drives like a car. Pictured is a driver's eye view showing the rear view/internal camera display on the dashboard.

>>>



The well designed kitchenette has it all. The gas hob (on the left) and sink have a cover that provides a generous amount of bench space. The three way fridge (12/240v and gas) is located under the bench and even the drawers are easy glide. The microwave above completes the well appointed kitchen.



The wardrobe for hanging jackets.



The view from the horse section in to the living area. The living comes with a dining table, but so far Steph has set a table up in the horse section which works well and leaves more room in the living. The horse section is also a bathroom and dining room.



The three burner gas hob. There is also LED lights throughout.



The Aircommand Ibis 3 air conditioner/heater has the lowest rooftop profile of any air conditioner on the market. This can be a real plus under some country bridges.



The flat screen TV is positioned above the living entrance. As well as over the bed, there is also a three way skylight in the compact, but stylish living area.



The sofa with plenty of storage below to stow the linen etc.



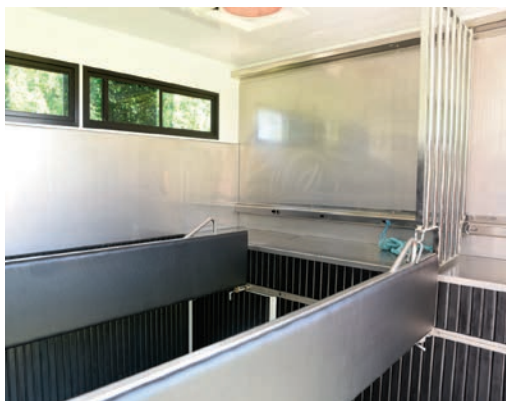
The queen sized bed in the luton is bathed in light thanks to the three way skylight. Open to the air with insect protection, shaded and totally closed. There is also plenty of storage at the foot of the bed.



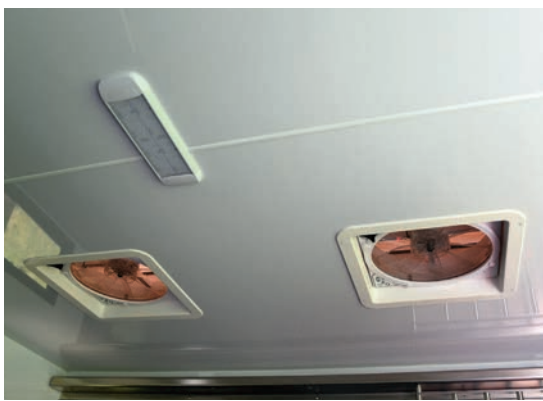
A shower in the horse section is not unique to Wade, but they do give the idea a bit more glamour. The Weekender is all about saving space and in effect provide a huge bathroom. Towel hooks are next to the shower head as well as a shelf for soap and shampoo etc.



Welcome aboard. The living entrance on the left and the horse entrance in the middle of the vehicle. The ramp is lined with thick industrial rubber and rubber grip strips. You can also see the longer ramp feet in action.



The horse section holds three horses, but Steph at the moment is only travelling one, so she has set the back up for one horse and removed one of the head dividers. The dividers are easy open and spring loaded. The horses travel facing backwards.



The air flow in the horse section is regulated by these ceiling fans. They take the hot air out and bring the fresh air in. The three horse section is well ventilated. The interior is all stainless steel and heavy duty rubber with plenty of drainage.



This deep channel provides drainage for everything including shower water. The metal work is all stainless steel and rustproof.



This cupboard in the horse section holds the canister toilet.



The hydraulic operated loading ramp has two sets of feet. The higher of the feet folds back flush with the side of the vehicle. The longer of the feet are helpful if the vehicle is parked on a bit of a slope and reduces the pitch of the ramp.



This storage box at the back corner of the vehicle goes right the way through and is suitable and sized for bales of hay or straw, or in this case rugs.



This storage box, just below and behind the living entrance houses the 240 volt power plug with the lead coming out through the bottom, so the box can be kept locked.

>>>



The tack locker is situated at the back of the truck. It's easily accessible and has more than enough room for Steph's gear.



Yet more storage. It's not possible to have too much storage when travelling horses.



Plenty of rug storage, this time on the driver's side of the vehicle.

There is plenty of below stairs storage and this box on the left hand side of the vehicle holds the two 12 volt batteries that run much of the living, as well as the hydraulic switch to raise and lower the body of the truck in order to service the engine.



WADE EQUINE COACHES

WADE EQUINE  
PLATINUM SERIES

Wade Group is an Australian DOTARS  
Registered Production and Design Facility.  
Our products come with a full 3 year warranty  
on all workmanship and materials.

Visit our website  
[WWW.WADEGROUPLTD.COM](http://WWW.WADEGROUPLTD.COM)  
and view our latest videos



Wade Group (Aust) Pty Ltd - Sales Manager Alyssa Lobb +64 7957 9647 - Australian Sales Agent John Twomey +61 0438 603 947 - [www.wadegroupltd.com](http://www.wadegroupltd.com) - [wade@wadegroup.co.nz](mailto:wade@wadegroup.co.nz)

97-jan18